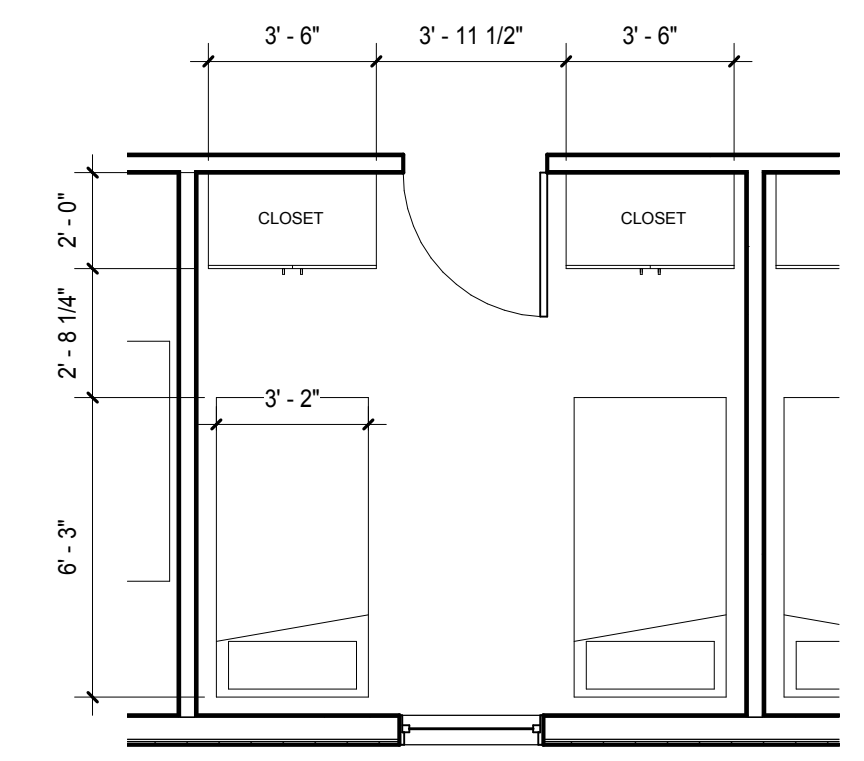


GROSS BUILDING AREA = 5,865 SF
 GUEST = 28 BEDS
 STAFF = 4 BEDS
 TOTAL = 32 BEDS

1 FLOOR PLAN
 PR-1 1/8" = 1'-0"



2 TYPICAL ROOM ENLARGED PLAN
 PR-1 1/4" = 1'-0"